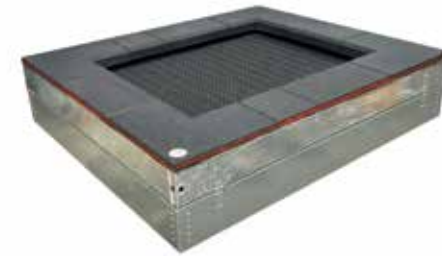
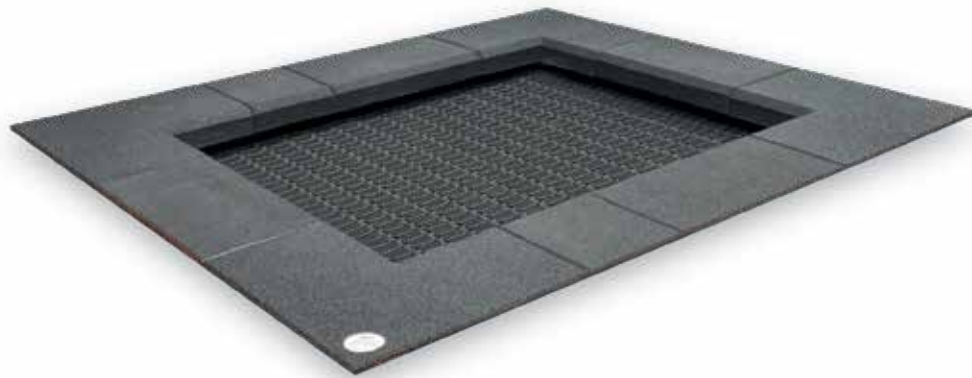


# Mounting instructions bouncing element „jump S“

Item no. 514675xx1



*Diagram 1: Overall view of the play equipment  
Small bouncing element according to EN 1176:2017 Chapter 1 4.2.16.1.*

# Mounting instructions bouncing element „jump S“

Item no. 514675xx1

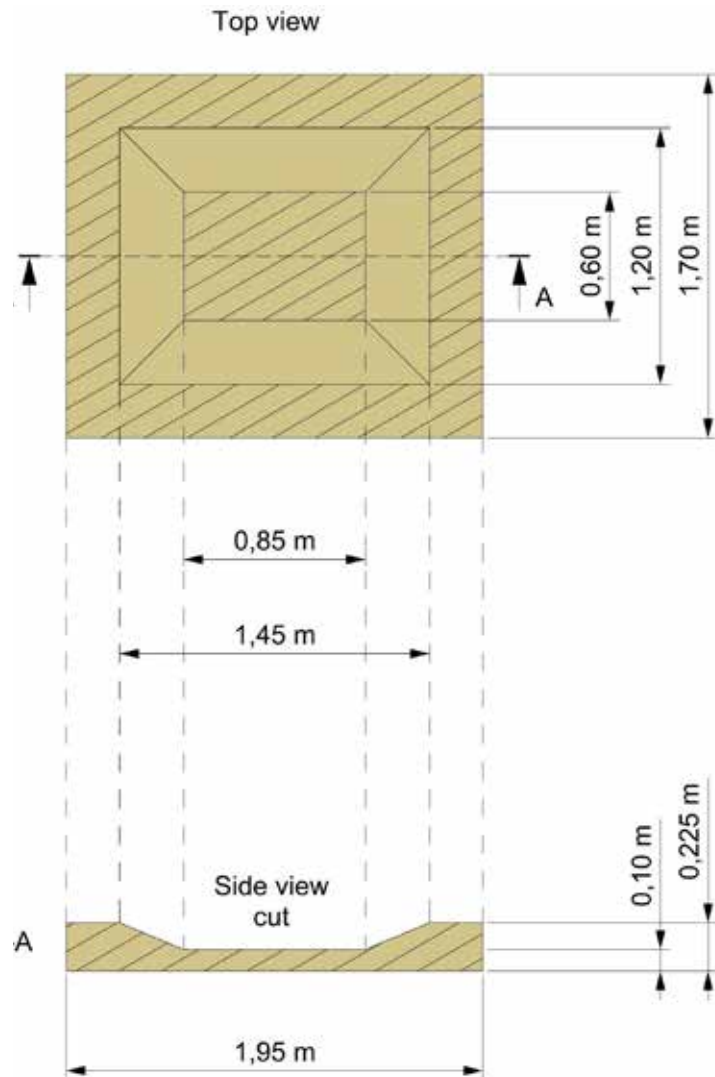


Diagram 2: Combined frost protection and load bearing layer

1. Select the play equipment location in consideration of the required safety area (s. diagram 4: 4250 x 4000 x 1000 mm).
2. Carry out excavation work for the foundation as shown in diagram 3.  
pit size: (LxWxH) 1950 x 1700 x 550 mm  
excavation of the pit: 1,83 m<sup>3</sup>  
Needed combined frost protection and load bearing layer material: 0,62 m<sup>3</sup>  
**Note:** Lifting equipment is needed
3. Create combined frost protection and load bearing layer as shown in diagram 2.
4. Screw the eyebolts into the existing holes and use as lifting point.
5. Lift Bouncing Element Jump S and place it in the middle of the pit.
6. Unscrew eyebolts.
7. Fill the gap with parts of excavation.
8. Think about safety surface.
9. For a maximum fall height of  $\leq 1,00$  m safety surface must be according to EN 1176-1:2017 4.2.8.5 table 4.  
For a bouncing element, the extent of the clearance must be 1,50 m horizontally around the jump surface, measured at each point of the edge, and 3,50 m above the jump surface.
10. Do not allow children to use the equipment before the installation has been finished.

**Attention:** If the play equipment has been incompletely installed or partly dismantled when carrying out maintenance and repair work, this may lead to particular risks of injury for the user. For this reason, make clearly visible that the equipment shall not be used in such cases.

# Mounting instructions bouncing element „jump S“

Item no. 514675xx1

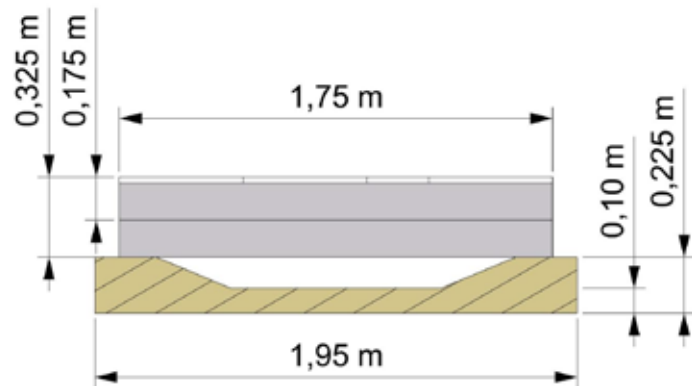


Diagram 3: Cut through installed Bouncing Element Jump S

Extent of the minimum zone =  
safety area

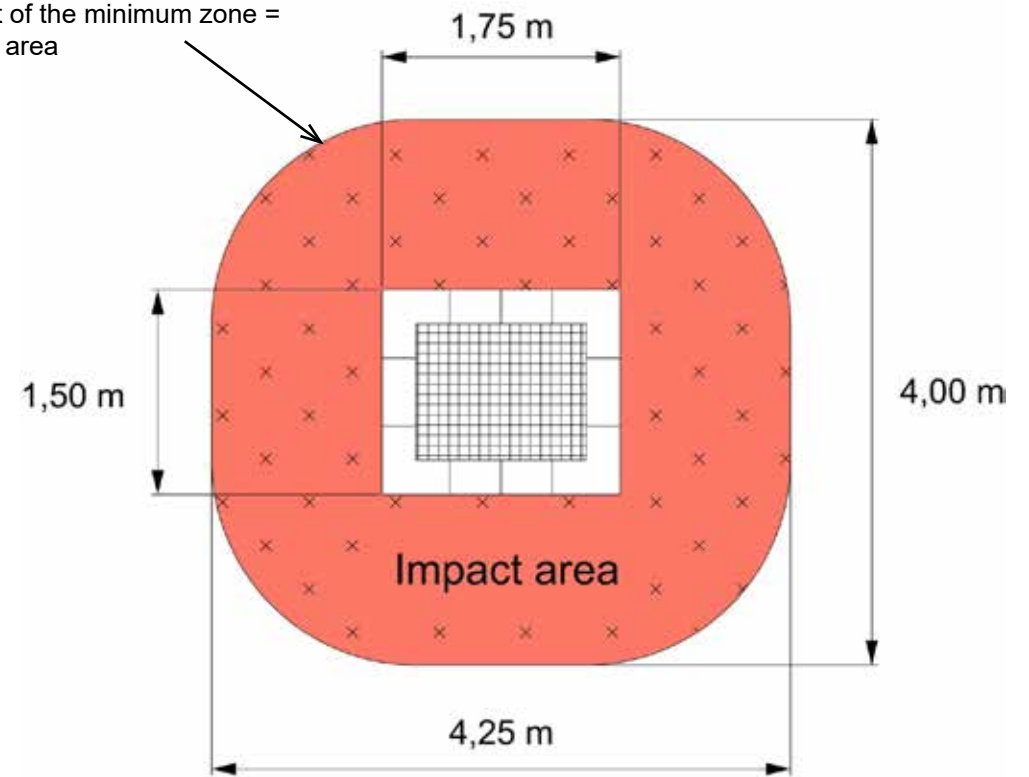


Diagram 4: Top view